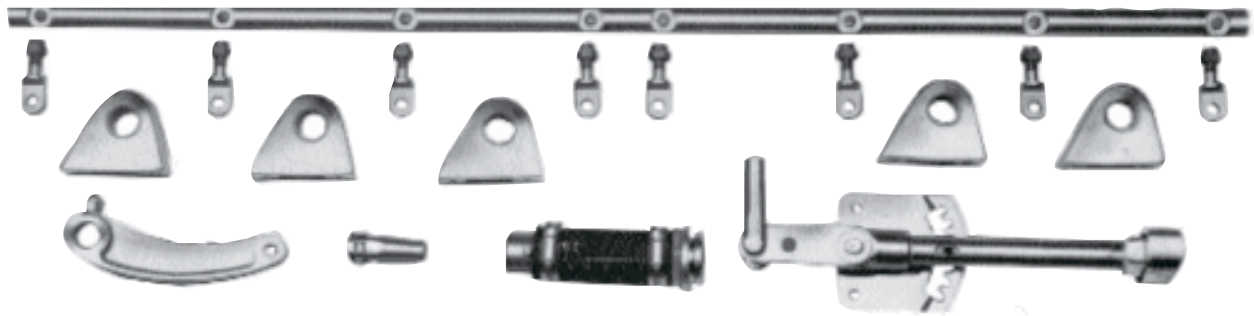


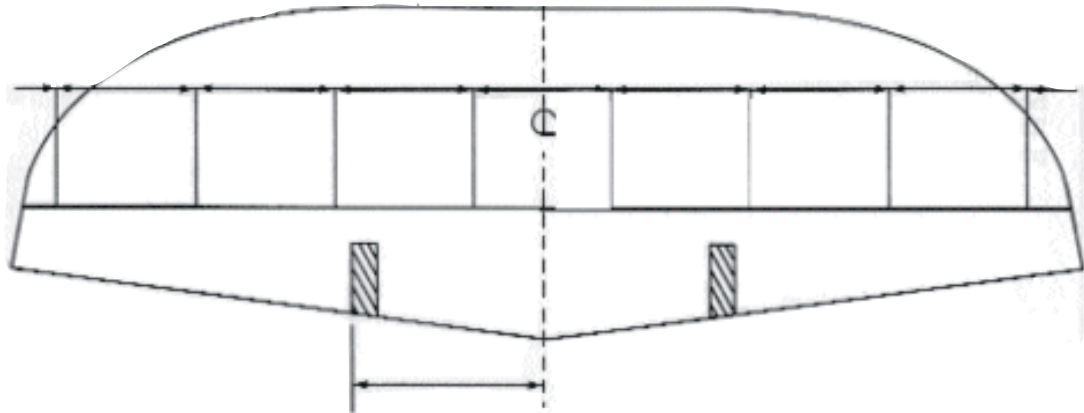
CAVITATION PLATE HARDWARE

DELUXE ADJUSTABLE CAVITATION PLATE HARDWARE



The deluxe kit is furnished with Item #580 bronze chrome pillow transom blocks with 7/8" bronze bushings. The deluxe kit uses the stainless steel control arms (Item #583) which bolt through the 7/8" control shaft (Item #593). Deluxe kit is also available with staggered stainless steel control arms. Please accompany order with drilling dimensions on control shaft (use diagram below) and we will drill the shaft at no extra charge.

Description	Item No.
Deluxe Kit	577
Deluxe Kit With Staggered Arm	578



7/8" CONTROL SHAFT



Drilled and spotfaced to receive our 3/4" stainless control arms. This control shaft is furnished with our deluxe adjustable plate kit. Accompany order with layout on above diagram to facilitate drilling and spotfacing.

Description	Item No.
7/8" Control Shaft	593

1" CONTROL SHAFT



Drilled and spotfaced to receive our 3/8" stainless control arms or 7/16" x 1 1/4" stainless control arm. Accompany order with layout on above diagram to facilitate drilling and spotfacing.

Description	Item No.
1" Control Shaft	3050
7/16" x 1 1/4" S.S. Control Arm	3060

CAVITATION PLATES

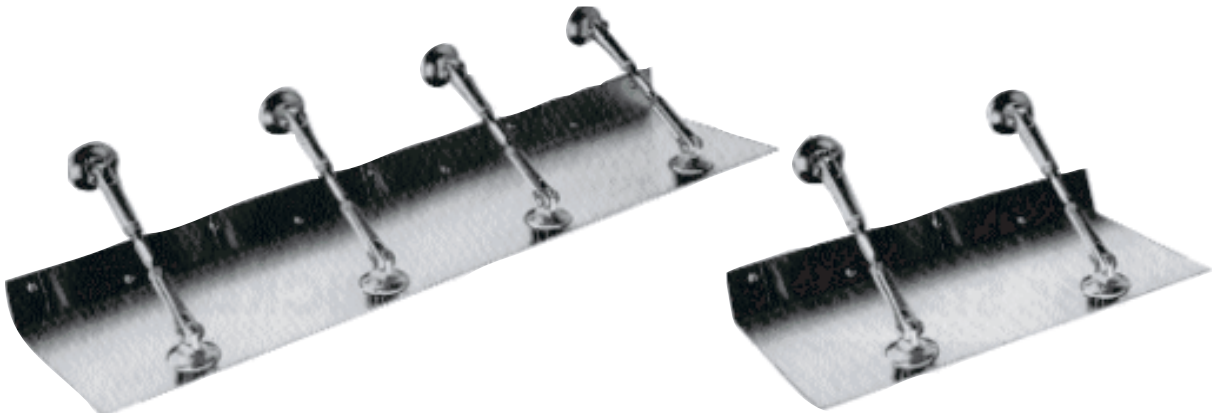
STANDARD CAVITATION PLATES



Our cavitation plates are adjustable and control the ride to individual preferences. Cavitation plates are made of cad plated steel. Set includes 5/16" chrome brass plate bosses, stainless steel turnbuckles, pins and clips and hardware for mounting. Sold per pair.

Length	Width	Transom Angle	Item No.
18"	9"	90°	100
18"	9"	12°	99

CUSTOM CAVITATION PLATES



Our custom cavitation plates are made of stainless steel with a satin finish. Set includes 5/16" chrome brass plate bosses, stainless steel turnbuckles, pins and clips and hardware for mounting. Sold per pair.

Length	Width	Transom Angle	Item No.
18"	9"	90°	468
20"	6 ³ / ₄ "	90°	471
30"	6 ³ / ₄ "	90°	474
18"	9"	12°	467
20"	6 ³ / ₄ "	12°	470
30"	6 ³ / ₄ "	12°	473

TURNBUCKLES

1/2" STAINLESS STEEL TURNBUCKLE



Stainless steel turnbuckle for 3/8" bosses. Easy adjustment and double locking nuts for performance.
Uses Plate Boss - Item #472 or Item #475.

Minimum Eye to Eye Measurement	Maximum Eye to Eye Measurement	Item No.
6 ³ / ₄ "	8 ³ / ₄ "	3001
7 ³ / ₄ "	9 ³ / ₄ "	3002
8 ³ / ₄ "	10 ³ / ₄ "	3003
9 ³ / ₄ "	11 ³ / ₄ "	3004
10 ³ / ₄ "	12 ³ / ₄ "	3005
11 ³ / ₄ "	13 ³ / ₄ "	3006
12 ³ / ₄ "	14 ³ / ₄ "	3007
13 ³ / ₄ "	15 ³ / ₄ "	3008
14 ³ / ₄ "	16 ³ / ₄ "	3009
15 ³ / ₄ "	17 ³ / ₄ "	3010
17 ³ / ₄ "	19 ³ / ₄ "	3011
19 ³ / ₄ "	20 ³ / ₄ "	3012

3/8" STAINLESS STEEL TURNBUCKLE



Stainless steel turnbuckles for 3/8" bosses. Easy adjustment and double locking nuts.
Uses Plate Boss - Item #472 or Item #475.

THREAD SIZE: 1/2-20

Minimum Eye to Eye Measurement	Maximum Eye to Eye Measurement	Item No.
6 ³ / ₄ "	8 ³ / ₄ "	79
7 ³ / ₄ "	9 ³ / ₄ "	80
8 ³ / ₄ "	10 ³ / ₄ "	81
9 ³ / ₄ "	11 ³ / ₄ "	82
10 ³ / ₄ "	12 ³ / ₄ "	83
11 ³ / ₄ "	13 ³ / ₄ "	84
12 ³ / ₄ "	14 ³ / ₄ "	85
13 ³ / ₄ "	15 ³ / ₄ "	86
14 ³ / ₄ "	16 ³ / ₄ "	87

5/16" STAINLESS STEEL TURNBUCKLE



Stainless steel turnbuckles for 5/16" bosses. Allows adjustment to the cavitation plate for ride comfort and performance.
Uses Plate Boss - Item #469 ONLY.

THREAD SIZE: 7/16-20

Minimum Eye to Eye Measurement	Maximum Eye to Eye Measurement	Item No.
6 ¹ / ₄ "	8 ¹ / ₂ "	73
7 ¹ / ₄ "	9 ¹ / ₂ "	74

THREAD SIZE: 3/8-24

CAVITATION PLATE HARDWARE

BRONZE AND STAINLESS STEEL COMPETITION BOSSES



Male bosses for 3/8" turnbuckles. Precision machined and available chrome plated or in stainless steel and are 2" in diameter.

Description	Item No.
Bronze Chrome	472
Stainless Steel	475

Male bosses for 5/16" turnbuckles. Precision machined and chrome plated and are 1-3/4" in diameter.



Description	Item No.
Bronze Chrome	469

STAINLESS STEEL SCREWS

5/16" x 1/2" stainless steel screws used to bolt cavitation plate bosses to the plate.



Item No.	480
----------	-----

STAINLESS STEEL PINS AND CLIPS



For connection of turnbuckles to bosses. Stainless steel pin with Stainless E clips.

Description	Item No.
For 5/16" Male Boss	476
For 3/8" Male Boss	477
Extra Clip - 5/16"	485
Extra Clip - 3/8"	486

STAINLESS STEEL PINS AND RINGS

5/16" or 3/8" pins with head and stainless steel ring. May be used in place of the pin and clip.



Description	Item No.
5/16"	479
3/8"	478

STAINLESS STEEL CLEVIS



Drilled and tapped 1/2-20 right hand thread. Sturdy construction, precision machined and polished.

	Item No.
Female	569
Male	570

CONTROL ARM CAST MANGANESE



Cast from 70,000 Manganese Bronze, chrome plated. Machined for 3/4" shaft. Use with 3/8" turnbuckles.

Description	Item No.
3/8"	565

STUDS, NUTS AND WASHERS



Attach bosses to the transom with these 5/16" x 2" studs, nuts and washers.

Item No.	481
----------	-----

CAVITATION PLATE HARDWARE

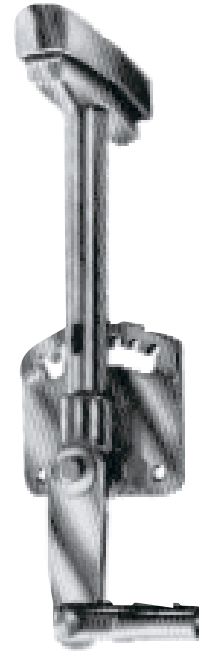
OVAL THRU HULL



Cast oval thru hull fitting for adjustable cavitation plates. Made in 90° and 12° angles for angled transoms.

Description	Item No.
90°	560
12°	561

CAVITATION PLATE HANDLE

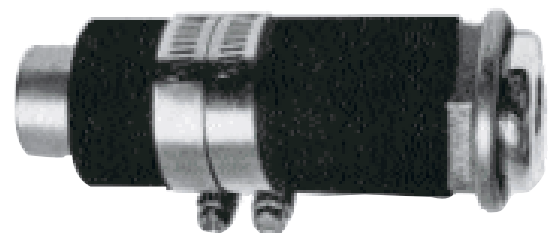


7 position cavitation plate control handle has the sector and lever cast of 70,000 manganese bronze, chrome plated. The plunger rod and clevis are stainless steel. Handle is polished and chrome plated.

Item No.
562

THRU HULL ASSEMBLY

Machined, bronze chrome plated. Has a 1/2" I.D. seal.



1/2" Seal Only

Item No.
559
556

CAVITATION PLATE HARDWARE

CONTROL LEVER

CAST MANGANESE BRONZE

Cast from 70,000 Manganese Bronze and is chrome plated. Precision machined for 3/4" or 7/8" shaft. Clevis is stainless for 1/2" shaft.

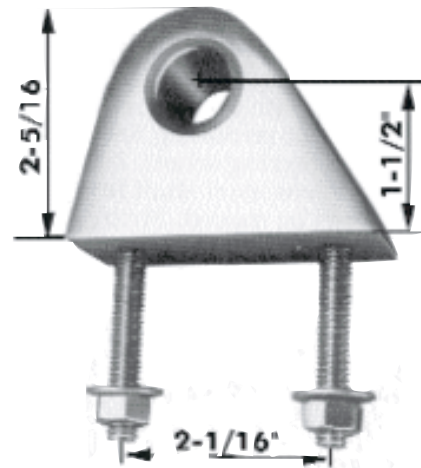
Size	Item No.
3/4" (On Clearance)	563
7/8"	564



TRANSOM PILLOW BLOCK

Precision machined. Available in highly polished aluminum or cast bronze chrome plated. Fitted with a bronze bushing for 3/4" or 7/8" shaft. Base is 1-1/8" x 3-1/16".

Shaft Size	Description	Item No.
7/8"	Aluminum polished	568
7/8"	Bronze chrome	580



STAINLESS CONTROL ARM

To obtain ultimate performance, it is sometimes necessary to adjust a portion of the cavitation plate up or down. To accomplish this, these control arms are available in staggered lengths. Bolts through a 7/8" control shaft. To determine length, measure from bottom of barrel to center of eye. Thread size is 3/8-24. Uses 3/8" pin.

From Shaft to
Center of Eye

Item No.

7/8"	583
1"	584
1-1/8"	591
1-1/4"	587
1-3/8"	586
1-1/2"	588
1-5/8"	589
1-3/4"	581
1-7/8"	582
2"	585
2-1/8"	590
2-1/4"	592

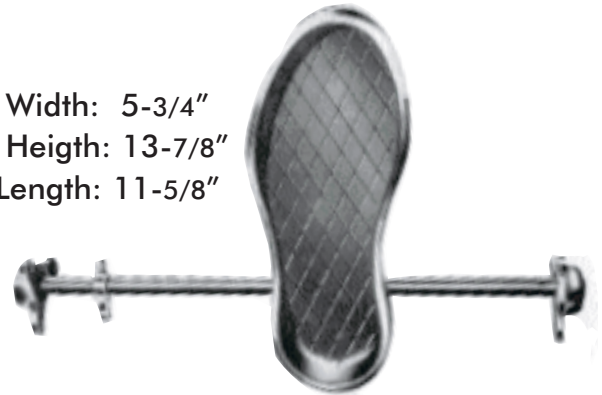


CAVITATION PLATE CONTROLS

CAVITATION FOOT CONTROL

Allows the driver to control the cavitation plate adjustment with their foot, without removing their hand from the steering wheel. Includes 7/8" stainless steel shaft keyed so pedal may be moved. Stringer blocks have 7/8" oil lite bushings.

Pedal Width: 5-3/4"
Pedal Height: 13-7/8"
Base Length: 11-5/8"



Item No.
543

OVERRIDE ASSEMBLY

Allows use of both a hand and foot pedal cavitation plate control adjustment. Stainless steel slip joint is furnished for the cavitation handle, along with spring, collars, aluminum angle and knuckle joint.

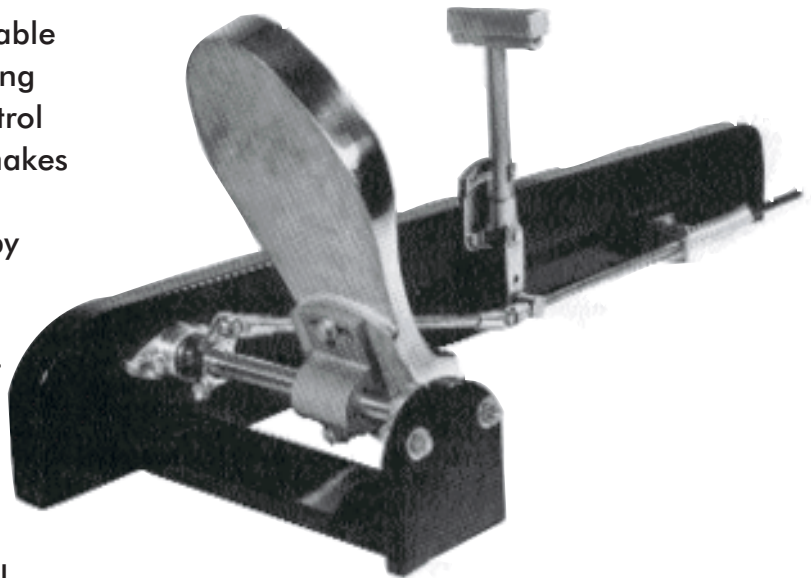


Item No.
544

ADJUSTABLE CAVITATION PLATE OVERRIDE

HOW IT WORKS

On high speed boats, quick accurate setting of the cavitation plate is desirable for safety and best performance. Using a combination Foot Control and Control Handle with an Override Assembly makes such adjustment quick and positive. Usually the cavitation plates are set by the hand control to the desired pitch. However, when quick acceleration is desired, or when the bow of the boat needs to be brought down instantly, the foot control can be depressed to override the hand control. When the foot control is released the cavitation plate will return to its initial pre-set pitch.



PICKUP KITS • HOSE

CAVITATION PLATE PICKUP KIT

STAINLESS STEEL

This stainless steel cavitation plate pickup is used to take water from the cavitation plates to the engine.



Description	Item No.
Kit complete - (No. 10-AN)	537
Pickup only - (No. 10-AN)	538
Thru Hull only - (No. 10-AN)	539
Pickup only - (No. 12-AN)	542
Thru Hull only - (No. 12-AN)	540

WATER HOSE



Water hose for connecting water supply on engine conversions.

Hose I.D.	Hose O.D.	Item No.
5/8"	1"	206
3/4"	1-1/8"	205
1"	1-3/8"	203

EXHAUST HOSE

CORRUGATED WITH WIRE



Pipe O.D.	Hose I.D.	Item No.
2-7/8"	2-7/8"	520
3-1/2"	3-1/2"	521
4"	4"	522

NOTE: EXHAUST HOSE CUT TO SIZE IS NOT RETURNABLE.

NEOPRENE HIGH PRESSURE HOSE AND FITTINGS



Used for oil and transmission lines. This hose has an average working pressure of 250 lbs. PSI and has an average burst pressure of 1,000 lbs. PSI per foot.

Fitting Only

Hose I.D.	Item No.
1/4"	616
3/8"	618
1/2"	615
5/8"	619
3/4"	617

Hose Only

Hose I.D.	Item No.
1/4"	596
3/8"	598
1/2"	595
5/8"	599
3/4"	597