

CONTROL CABLES

FLEXIBLE THROTTLE CONTROL



These heavy duty push-pull throttle cables have stainless steel housing and core is covered with plastic. Measure cable from end to end to determine length.

Cable Length	Item No.
8'	307
10'	308
12'	309
14'	310
16'	311

33C CABLE



The 33C Cable has 10/32 threads on both ends. Measure cable from end to end to determine length.

Cable Length	Item No.
6'	146
7'	147
8'	148
9'	149
10'	150
11'	151
12'	152
13'	153
14'	154
15'	155
16'	156
17'	157
18'	158

CABLE CLAMP STAINLESS STEEL

Securely lock your 33C Cables with this easy to mount stainless steel cable clamp.



Item No.
159

FLEXIBLE SHIFT CONTROL



Same as our Flex Throttle Control Cables, except made with plastic knob for use as dash mounted shift or hand throttle control. Measure cable from end to end to determine length.

Cable Length	Item No.
8'	312
10'	313
12'	314
14'	315
16'	316

43C CABLE



The 43C Cable has 1/4-28 threads on both ends. Measure cable from end to end to determine length.

Cable Length	Item No.
8'	160
9'	161
10'	162
11'	163
12'	164
13'	165
14'	166
15'	167
16'	168
17'	169
18'	170
19'	171

43BC CABLE



The 43BC Cable has 1/4-28 threads on both ends with a bulk head fitting on one end. Measure cable from end to end to determine length.

Cable Length	Item No.
10'	1239
11'	1240
12'	1241
13'	1242
14'	1243
15'	1244
16'	1245
17'	1246
18'	1247

DECK MOUNTS • ELECTRICAL TACHS • TACH CABLES

DECK TACH MOUNT

CAST ALUMINUM



Mounts on deck or cowling for easy visibility of tachometer. Accommodates 3 3/8" diameter tachometers. Polished aluminum.

Item No.
631

DECK GAUGE MOUNT

CAST ALUMINUM



Matches our deck tachometer mount. Accommodates 2 1/16" diameter gauges. Polished aluminum.

Item No.
632

STEWART WARNER ELECTRICAL TACHOMETER

Features Zener circuitry. Has a constant voltage supply without use of battery and an easy to read 250° full sweep dial. Sturdy, one piece construction requires no sender except for application on diesel engines. 12 volt. Reads 0-8,000.



TACHOMETER CABLES

JONES TACH CABLES

STEWART WARNER TACH CABLES

Description	Item No.	Description	Item No.
6'	623	6'	53506
7'	624	7'	53507
8'	625	8'	53508
9'	626	9'	53509
10'	627	10'	53510
11'	628	11'	53511
12'	629	12'	53512

CABLE STEERING PARTS

CABLE CLAMPS



Securely fasten steering cables with these copper clamps. Provides a positive lock to to our stainless steel cable.

Diameter
3/16"

Item No.
340

STEERING CHAIN



Chain is 24" in length.

Item No.
385

STAINLESS STEEL STEERING CABLE



Non-corrosive, strong steering cable. Has a high resistance to abrasion.

Diameter
3/16"

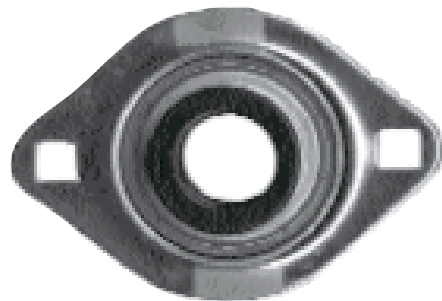
Item No.
338

STEERING SHAFTS

Description	Catalog No.	Item No.
48" Steel		390
36" Stainless Steel		391
48" Stainless Steel		392

Shafts are 3/4" in diameter with a standard taper. Includes 5/8"-18 SAE standard lock nut and woodruff key.

STEERING BEARING



Item No.
386

Item No.
383

STEERING TURNBUCKLE

